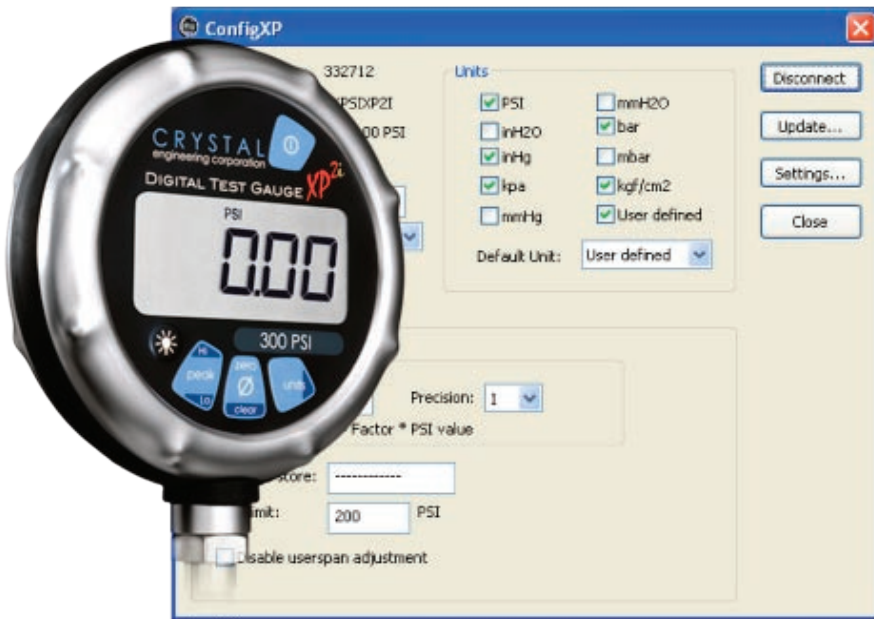


CONFIGXP

CRYSTAL
engineering corporation

Customizing Software for XP2i



CONFIGXP software lets you customize your XP2i for what you need it to do. Pressure scales that you don't need can be removed. A custom pressure scale can be added. Want a digital tag number? You store up to 12 digits directly into the XP2i's non-volatile memory.

CONFIGXP also lets you limit or change what is allowed with the gauge. For instance, the ability to recalibrate the gauge from the keypad can be disabled. Or the allowable range for zero or tare can be increased or decreased. And the "Peak" button can be disabled entirely.

CONFIGXP runs on Windows equipped computers, and works with all versions of XP2i and XP2 digital test gauges. Best of all, it's free! Find it at www.XP2i.com.

Customize your XP2i

•
Remove Unnecessary Pressure Scales

•
Disable Peak Button

•
Store Identifying Text in XP2i Memory

•
Change Water Density

•
Define a Custom Pressure Unit

•
Disable "Peak" Display

•
Disable Keypad Re-calibration

•
Limit or Expand Allowed Zero or Tare Range

Copyright © 2007

Crystal Engineering Corporation

708 Fiero Lane, Suite 9

San Luis Obispo, CA 93401-8701, U.S.A.

Visit us on the web at

www.crystalengineering.net