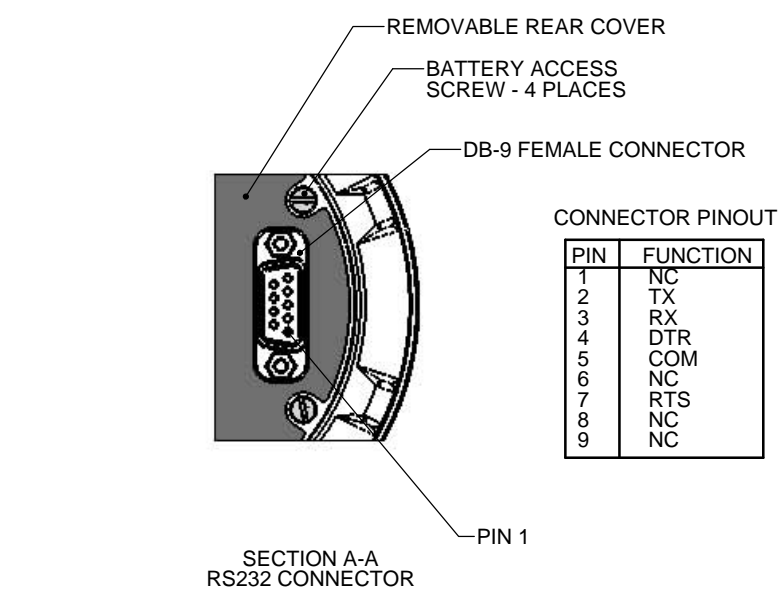
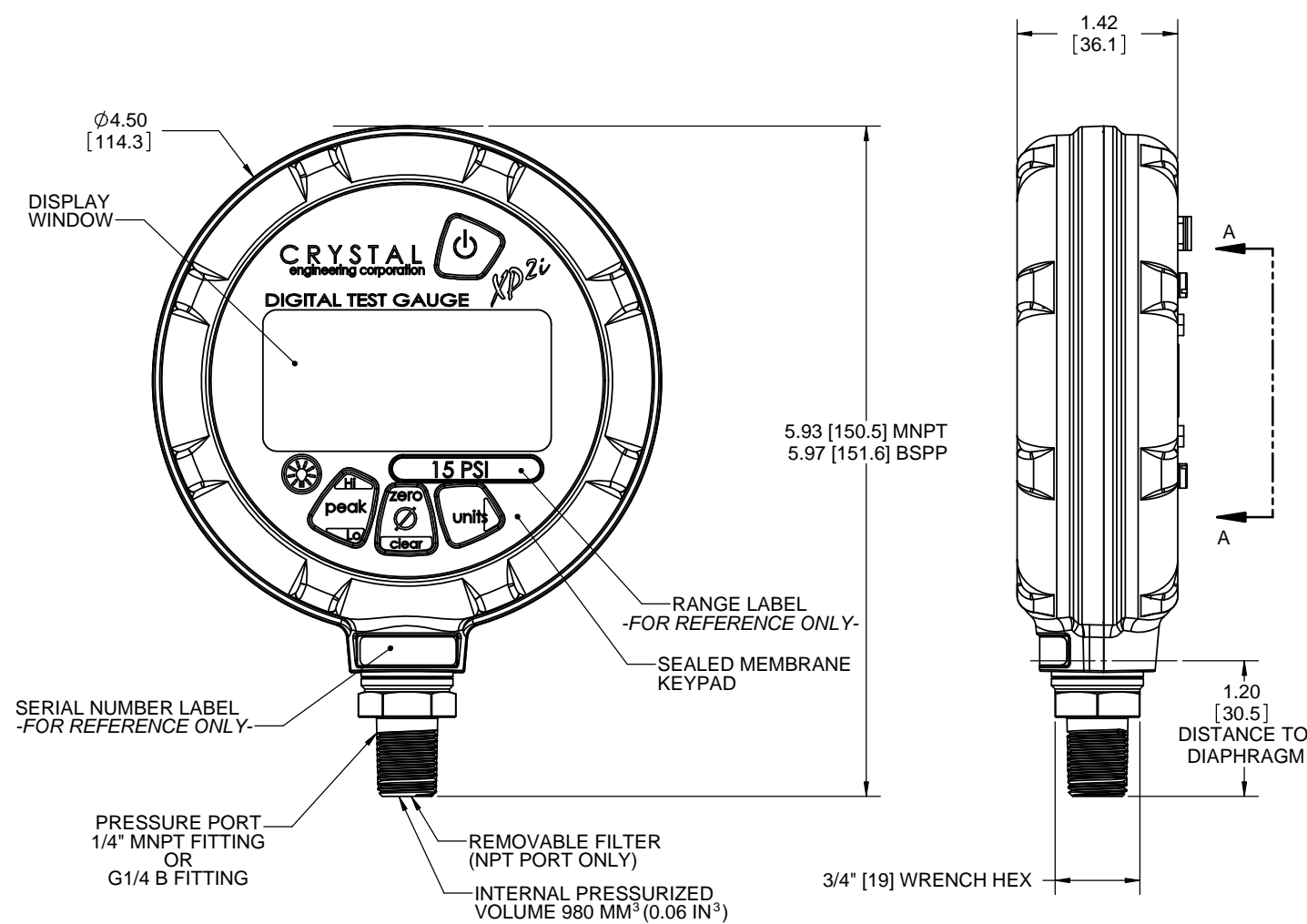


REVISIONS			
REV.	DESCRIPTION	DATE	APPROVED
0	RELEASED FOR PRODUCTION	10/23/06	ON FILE
B	UPDATED FOR REVISED XP2I PER ECO 09-001	1/5/2009	ON FILE
C	UPDATED FLANGE VIEWS PER ECO 09-038	6/9/2009	ON FILE



(1) kPa MODELS DISPLAY PRESSURE IN kPa, MPa, bar, mbar if applicable.  
(2) MPa IS AVAILABLE ON -DD MODELS ONLY.

**SPECIFICATIONS**

**PRESSURE RANGE:** SEE PRESSURES AND RESOLUTIONS CHART  
**PRESSURE ACCURACY:** 20 - 100% OF FULL SCALE ±(0.1% OF READING)  
0 - 20% OF FULL SCALE ±(0.02% OF FULL SCALE)  
**VACUUM ACCURACY:** (ONLY APPLIES TO 300 PSI AND LOWER PRESSURE GAUGES)  
0 to -99.9 kPa (-14.5 PSIG): ±0.25% OF FULL SCALE  
WHERE FULL SCALE: -99.9 kPa (-14.5 PSIG)  
**POWER:** THREE AA (1.5V) AA; RAYOVAC MAXIMUM PLUS, ENERGIZER® E91, ENERGIZER® EN91, OR DURACELL MN1500. USE OF ANY OTHER BATTERY VOIDS INTRINSIC SAFETY RATINGS  
**PRESSURE CONNECTION:** 1/4"-18 MALE NPT OR G 1/4 B PER ISO-228-1 (BSPP)  
**ENCLOSURE:** NICKEL-PLATED ALUMINUM ALLOY CASE, AUTOFLEX-EBG10 MEMBRANE SWITCH PANEL.  
**ENCLOSURE RATING:** DESIGNED TO MEET NEMA4/IP67  
**WEIGHT:** 17.6 oz (500 g)  
**PRESSURE PORT MEDIA COMPATIBILITY:** LIQUID AND GASES COMPATIBLE WITH 316L SS SENSOR.  
**OPERATING AND COMPENSATED TEMPERATURE RANGE:** -10 °C TO +50 °C (14°F TO 122°F).  
**STORAGE TEMPERATURE RANGE:** -40 °C TO +75 °C (-40°F TO 167°F).  
**CERTIFICATIONS:**  
**INTRINSICALLY SAFE:**  
**CSA:** CLASS I, DIVISION 1, GROUPS A, B, C, AND D - T4 (CANADA AND U.S.)  
**ATEX:** Ex II 1 G Ex ia IIC T4 KEMA 04ATEX 1053 X  
**IECEX SCHEME:** IECEX CSA 05.0001X Ex ia IIC T4  
**OTHER:**  
**C-TICK:** COMPLIES WITH AUSTRALIAN C-TICK  
**DNV:** COMPLIES WITH DNV'S RULES FOR CLASSIFICATION OF SHIPS, HSLC AND OFFSHORE STANDARDS

DIMENSIONS ARE IN INCHES [MILLIMETERS]  
SPECIFICATIONS SUBJECT TO CHANGE WITHOUT NOTICE.  
PROTECTIVE BOOT OPTION SHOWN ON SHEET 2  
MOUNTING FLANGE AND REAR PORT OPTIONS SHOWN ON SHEET 2

**PRESSURES AND RESOLUTIONS**

AVAILABLE PRESSURES				AVAILABLE UNITS AND DISPLAY RESOLUTIONS										
PSI	bar	kPa (1)	ALLOWED OVERPRESSURE PSI	PSI	kg/cm2	"Hg	"H2O	mmHg	mmH2O	kPa	bar	mbar		
15	1	100	100	0.001	0.0001	0.001	0.01	0.01	1	0.01	0.0001	0.1		
30	2	200	100	0.001	0.0001	0.001	0.01	0.1	1	0.01	0.0001	0.1		
100	7	700	200	0.01	0.0001	0.01	0.1	0.1	1	0.01	0.0001	0.1		
300	20	2000	600	0.01	0.001	0.01	0.1	1		0.1	0.001	1		
500	30	3000	1000	0.01	0.001	0.1	1	1		0.1	0.001	1		
1000	70	7000	2000	0.1	0.001	0.1				0.1	0.001	MPa (2)		
2000	140	14000	4500	0.1	0.01	0.1				1	0.01	0.001		
3000	200	20000	4500	0.1	0.01	0.1				1	0.01	0.001		
5000	300	30000	7500	0.1	0.01	1				1	0.01	0.001		
10000	700	70000	15000	1	0.01					1	0.01	0.001		

**VACUUM AND RESOLUTIONS**

APPLICABLE PRESSURES			AVAILABLE UNITS AND DISPLAY RESOLUTIONS								
PSI	bar	kPa	PSI	kg/cm2	"Hg	"H2O	mmHg	mmH2O	kPa	bar	mbar
15	1	100	0.001	0.0001	0.001	0.01	0.01	1	0.01	0.0001	0.1
30	2	200	0.001	0.0001	0.001	0.01	0.1	1	0.01	0.0001	0.1
100	7	1000	0.01	0.0001	0.01	0.1	0.1	1	0.01	0.0001	0.1
300	20	2000	0.01	0.001	0.01	0.1	1		0.1	0.001	1

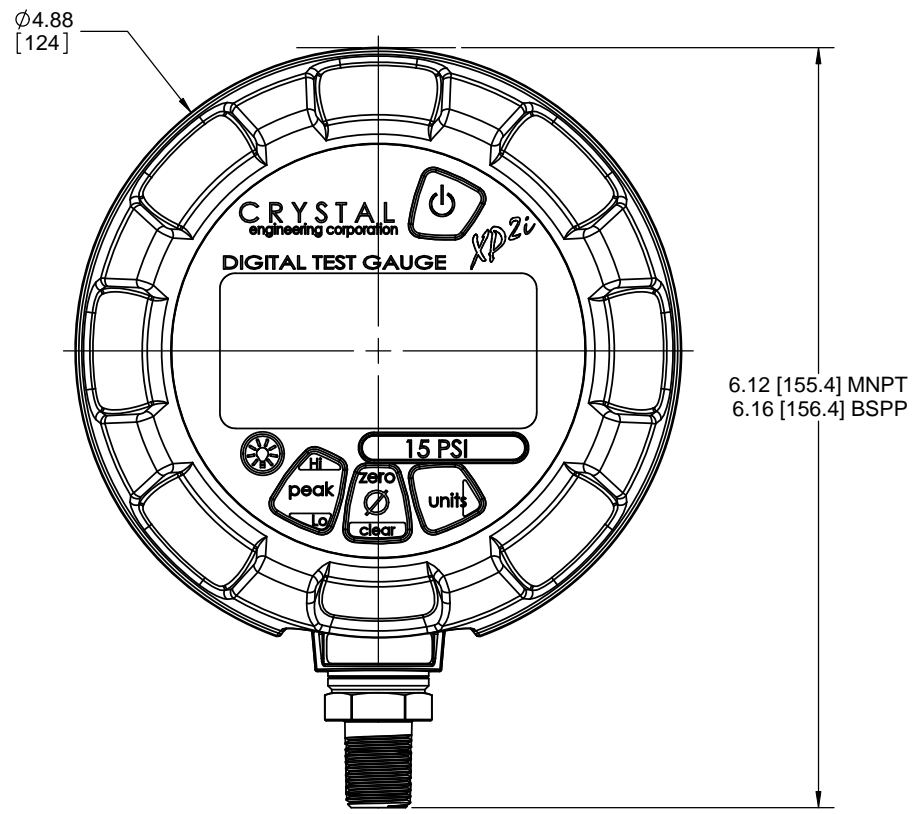
UNLESS OTHERWISE SPECIFIED DIMENSIONS ARE IN INCHES  
TOLERANCES ARE:  
FRACTIONS DECIMALS ANGLES  
XXX ± .005  
.XXXX ± .001

**CRYSTAL** (805) 595-5477  
engineering corporation www.crystalengineering.net

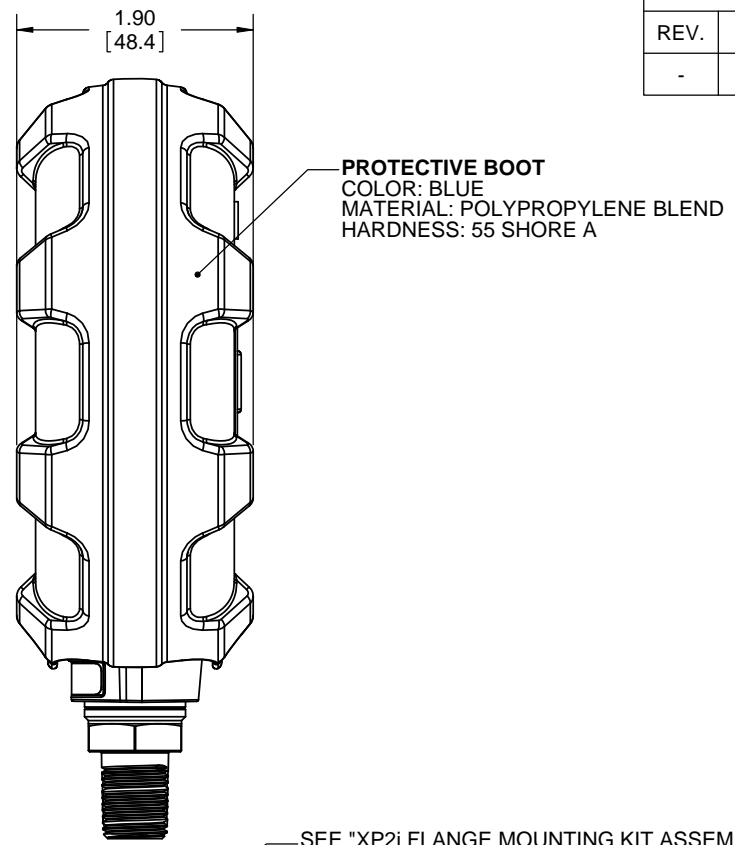
**PROPRIETARY NOTICE**  
THIS DOCUMENT AND ANY DATA DISCLOSED HEREIN IS THE SOLE PROPERTY OF CRYSTAL ENGINEERING CORPORATION AND MAY NOT BE REPRODUCED, USED OR DISCLOSED IN PART OR IN WHOLE, TO ANYONE WITHOUT THE WRITTEN CONSENT OF CRYSTAL ENGINEERING CORPORATION.

APPROVALS	DATE	XP2i SERIES PRESSURE GAUGE		
DRAWN M.J.Cain	10/11/06	SCALE: 1:1	SIZE C	DRAWING NO. 3495
CHECKED D. Porter	10/20/06			REV C
MFG. ENGR. M.J.Cain	10/20/06			
Q.A. M. Merrill	10/23/06	DO NOT SCALE DRAWING		SHEET 1 OF 2

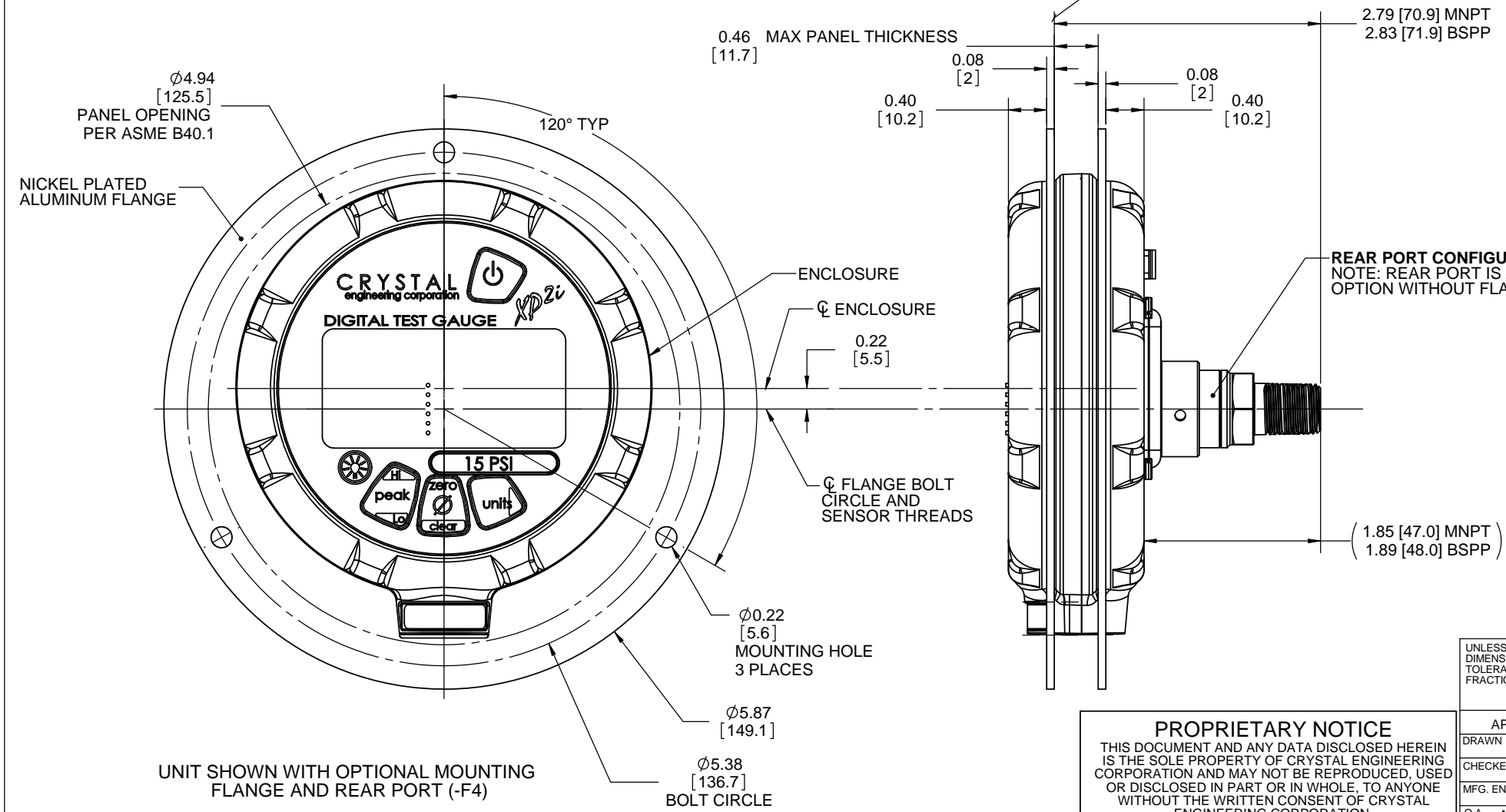
REVISIONS			
REV.	DESCRIPTION	DATE	APPROVED
-	See Sheet1	-	-



UNIT SHOWN WITH OPTIONAL PROTECTIVE BOOT



NOTES:  
REFER TO SHEET 1



UNIT SHOWN WITH OPTIONAL MOUNTING FLANGE AND REAR PORT (-F4)

SEE "XP2i FLANGE MOUNTING KIT ASSEMBLY INSTRUCTIONS" (CRYSTAL ENGINEERING P/N 3962) FOR FLANGE MOUNT PANEL CUT-OUT DIMENSIONS, TEMPLATE AND ASSOCIATED INFORMATION.

REAR PORT CONFIGURATION  
NOTE: REAR PORT IS AVAILABLE AS AN OPTION WITHOUT FLANGE (-RP)

**PROPRIETARY NOTICE**  
THIS DOCUMENT AND ANY DATA DISCLOSED HEREIN IS THE SOLE PROPERTY OF CRYSTAL ENGINEERING CORPORATION AND MAY NOT BE REPRODUCED, USED OR DISCLOSED IN PART OR IN WHOLE, TO ANYONE WITHOUT THE WRITTEN CONSENT OF CRYSTAL ENGINEERING CORPORATION.

UNLESS OTHERWISE SPECIFIED DIMENSIONS ARE IN INCHES TOLERANCES ARE: FRACTIONS DECIMALS ANGLES .XXX ± .005 .XXXX ± .001		<b>CRYSTAL</b> (805) 595-5477 engineering corporation www.crystalengineering.net	
APPROVALS	DATE	XP2i SERIES PRESSURE GAUGE	
DRAWN M.J.Cain	10/11/06	SCALE: 1:1	SIZE C
CHECKED D. Porter	10/20/06	DRAWING NO. 3495	REV C
MFG. ENGR. M.J.Cain	10/20/06	DO NOT SCALE DRAWING	
Q.A. M. Merrill	10/23/06	SHEET 2 OF 2	