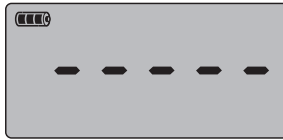
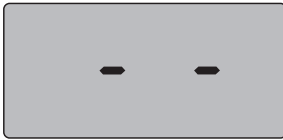


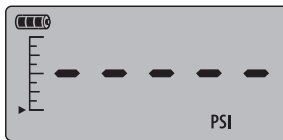
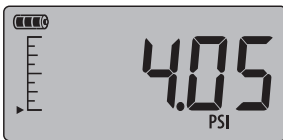
m1 Quick Reference



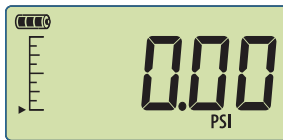
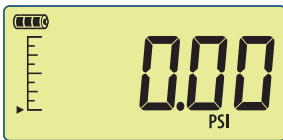
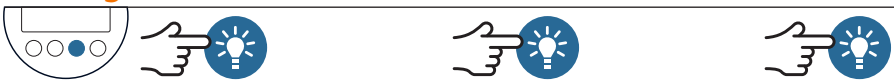
Power On



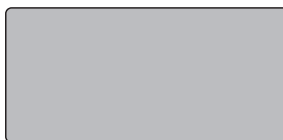
Zero



Backlight



Power Off



CRYSTAL

m1QuickReference

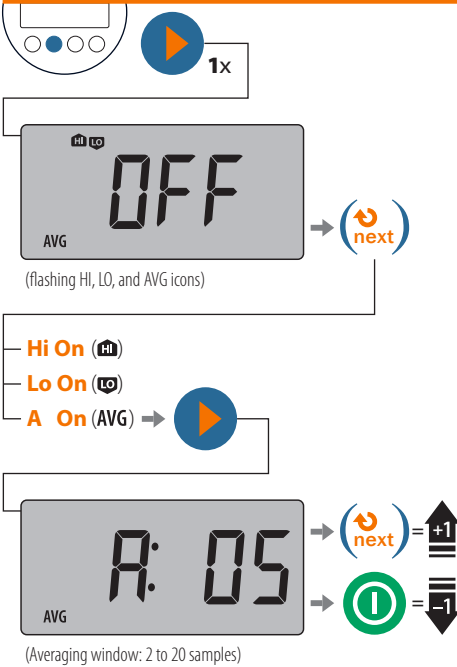
Note: Pressing the **enter** button always returns the gauge to operating mode. If you want to set multiple Display Functions, press the **setup** button to navigate from one Display Function to the next, then press the **enter** button when you are done.

Gauge Setup Basics

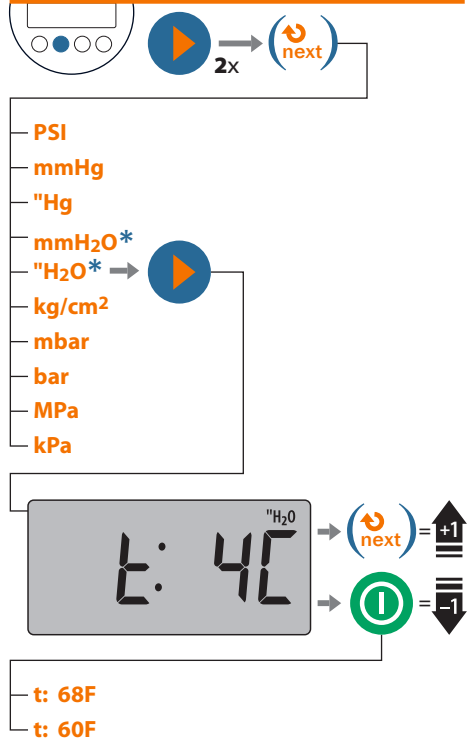


Gauge Setup Map

Maximum, Minimum, or Averaging



Pressure Units



All units are not available with every pressure range.

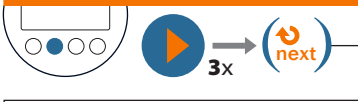
* H₂O icons and temperature settings will only display on H₂O enabled units.



CRYSTAL

Gauge Setup Map continued

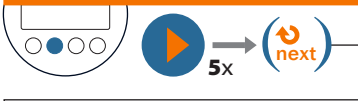
Vertical Bar Graph



- On (solid Bar Graph)
- Off (flashing Bar Graph)

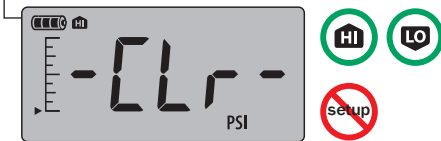


Backlight Timer



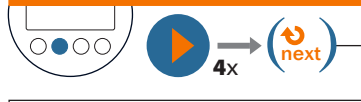
- Lt: 15 (light stays on for 15 seconds)
- Lt: 60 (light stays on for 60 seconds)
- Lt: On (light does not turn off automatically)

To Clear Peaks or Line Pressure



Note: If there is no gauge activity for 10 seconds, the gauge will return to operating mode. Any Setup options that you have selected will be enabled.

Auto Off





- Off 1H (gauge turns off after 1 hour)
- Off -- (gauge does not turn off automatically)

Readings per Minute Settings (Extended Battery Life)*



- rd 0.1 (1/10 minutes . . . 30,000 hours)
- rd 0.2 (1/5 minutes . . . 25,000 hours)
- rd 1.0 (1/1 minute . . . 10,000 hours)
- rd 2.0 (1/30 seconds . . . 6,000 hours)
- rd 4.0 (1/15 seconds . . . 3,000 hours)
- Off -- (4/1 second 600 hours)
- Off 1H (4/1 second 600 hours)

Whenever one of the **rd** settings is selected the battery icon will change from  to  indicating that the M1 is in power-saving mode.

*This menu can be accessed only when the gauge is off.

Troubleshooting

Err 1 displayed:

The M1 checks the internal calibration every time it's turned on. **Contact factory for further instructions.**

Err 2 displayed:

The M1 has tried to display a number too large for the display due to electrical malfunction or numerical error. **Contact factory for further instructions.**

Err 5 or Err 6 displayed:

The XP2i pressure sensor is exhibiting behavior out of normal operating condition. **Contact factory for sensor replacement.**

CRYSTAL

© 2011 Crystal Engineering Corporation
708 Fiero Lane, Suite 9, San Luis Obispo, California 93401-8701

